

Co-funded by the  
Erasmus+ Programme  
of the European Union



# RAPIDE

01/03/2021-28/02/2023

## Relevant assessment and pedagogies for inclusive digital education

Erasmus+

KA203 Strategic Partnerships for higher education

[rapide-project.eu](http://rapide-project.eu)

# RAPIDE in numbers



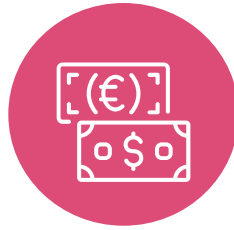
**6**

partners



**24**

months



**219.085,00 €**

budget



**4**

intellectual outputs

## Overall objective

- to co-create, implement and share innovative pedagogies and aligned assessment for relevant and inclusive digital education in order to deal with the COVID-19 induced and similar crises and to support meaningful digital transformation of HEIs.

## Specific objectives

- to implement and evaluate innovative and inclusive pedagogies that support student engagement, practical skills development and deep approach to learning in an online environment by digitally and pedagogically competent and confident teachers
- to support teachers to use relevant and inclusive assessment methods related to innovative pedagogies
- to support students and teachers in the meaningful implementation of innovative pedagogies in an online environment by means of ethical use of learning analytics with special attention given to students at risk
- to boost capacity of HEIs for monitoring and evaluating the implementation of innovative pedagogies in online, blended and distant learning and to perform impact analysis of innovative pedagogies on their digital transformation goals

# RAPIDE Partnership

is formed from HEIs leading in the area of innovative teaching in the different fields brought together to enable the transition of current teaching practice according to the new needs resulting from COVID-19 crisis and to perform an international exercise within developed material, tools and dashboards.

## Project Coordinator

**Faculty of Organization and Informatics, University of Zagreb (Croatia)**  
Prof. Blaženka Divjak, PhD

## Partners

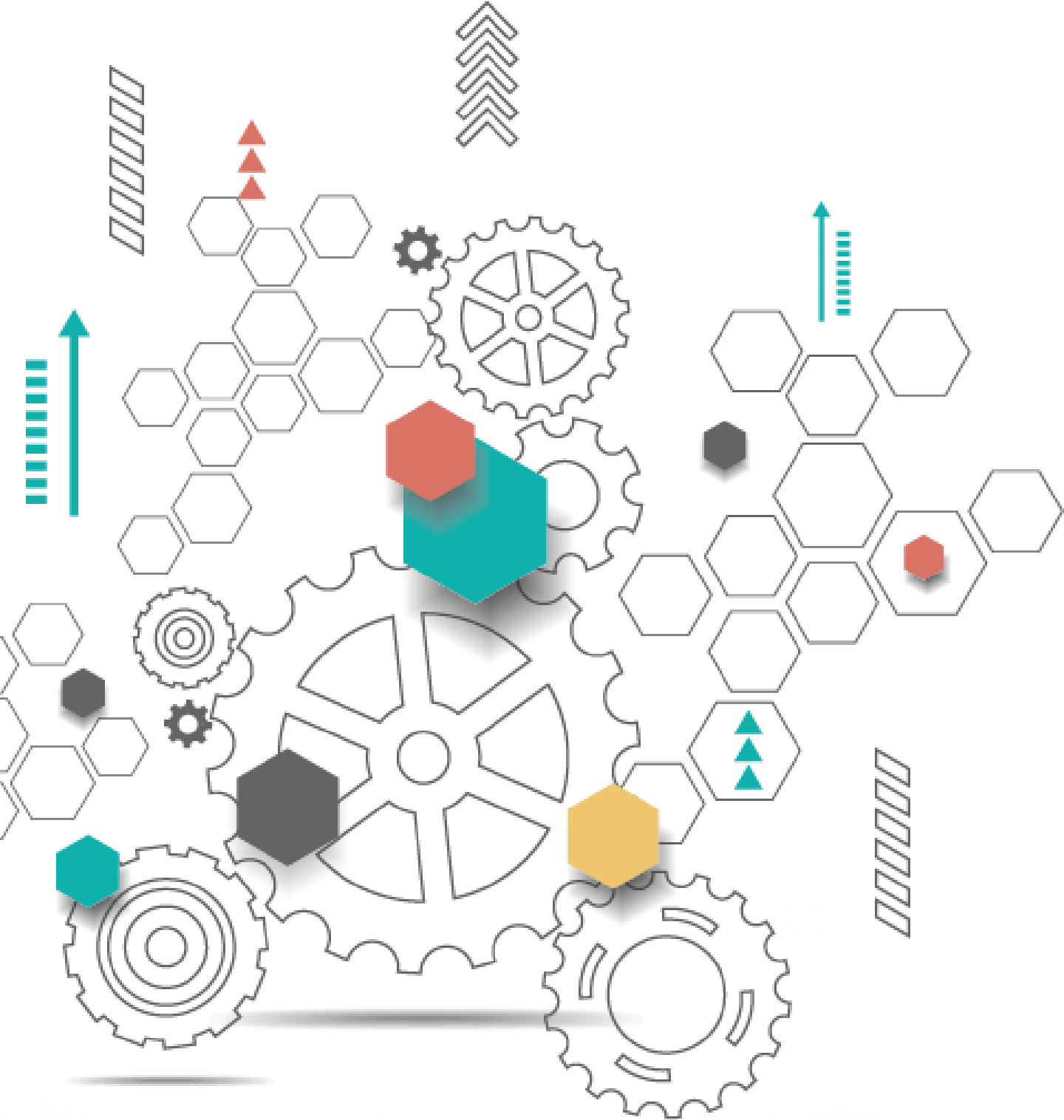
**Delft University of Technology (Netherlands)**  
Ioana Jivet, PhD

**Goethe University (Germany)**  
Prof. Alexander Tillmann, PhD

**School of Medicine, University of Zagreb (Croatia)**  
Assoc. prof. Mirza Žižak, PhD

**The Open University (United Kingdom)**  
Prof. Bart Rienties, PhD

**University of Rijeka (Croatia)**  
Prof. Marta Žuvić, PhD



Our results will be as good as our **mindset.**

**RAPIDE MINDSET** is based on the joint goal to ensure successful project results.



## **RAPIDE MINDSET includes:**

- Effective and efficient project management.
- Proper risk mitigation.
- Accepting the possibility to change.
- Orientation towards high quality.
- Opportune dissemination, communication and exploitation.



## **How we cooperate in RAPIDE?**

RAPIDE project culture is based on four main pillars:

COMMUNICATION

EFFECTIVENESS

TRANSPARENCY

NETWORKING

## **What we do in RAPIDE?**

RAPIDE project is:  
Goals and outcomes - oriented.

Meetings and Learning,  
Training, Teaching activities - supported.

Multiplier events - exploited.

## **Who is who in RAPIDE?**

Project roles are assigned according to competences and experience.



## **Well-balanced**

RAPIDE time and costs are well balanced.



## **Impact-driven**

RAPIDE power lies in its impact.



## **Sustainable**

RAPIDE results are sustainable and enable follow-up.





RAPIDE is result  
oriented.

RAPIDE

# RAPIDE Intellectual Outputs



## Intellectual Output 1

Open educational resources and e-course for flipped classroom (FC) and work based learning (WBL) for use



## Intellectual Output 2

Toolkit for assessment of students in FC and WBL in an online environment



## Intellectual Output 3

Dashboard model that supports inclusive FC and WBL



## Intellectual Output 4

Code of practice for HEIs on impact analysis of innovative pedagogies

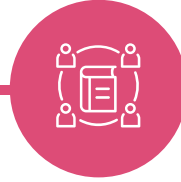


Communication  
and interaction is the  
key for RAPIDE  
**success.**



# We will meet and interact regularly.

04/2021



Kick-off „Welcome RAPIDE”  
UNIZG FOI, Croatia



07/2021

Meet2Flip  
Let's innovate teaching  
Open University, UK

11/2021



Meet2Flip  
Let's innovate assessment  
TU Delft, Netherlands




04/2022

Meet2Flip  
Let's innovate support  
Goethe University, Germany

01/2023



Final meeting – Keep Flipping  
UNIRI, Croatia

A network diagram of a globe, where the globe's surface is represented by a complex web of thin grey lines. Various colored nodes (dots) are scattered across the globe, representing different points of connection or data. The nodes are in shades of blue, green, orange, purple, and black. The text is overlaid on the left side of the globe.

RAPIDE results are as important as the **impact** they will have on us and the society.

# Multiplier events

**UK**

**RAPIDE Innovation in UK  
December 2022**

**NL**

**RAPIDE Innovation in Netherlands  
December 2022**

**DE**

**RAPIDE Innovation in Germany  
December 2022**

**CRO**

**Final Conference INNOVATED in Croatia  
January 2023**

RAPIDE

# Follow

**RAPIDE** project

[rapide-project.eu](http://rapide-project.eu)

# Contact us

[rapide@foi.unizg.hr](mailto:rapide@foi.unizg.hr)